



VCT TILE — 

CONCRETE — 

MARBLE — 

CARPET — 

1'x1' CERAMIC
TILE — 

2"x2" CERAMIC
TILE — 

SUB BASEMENT

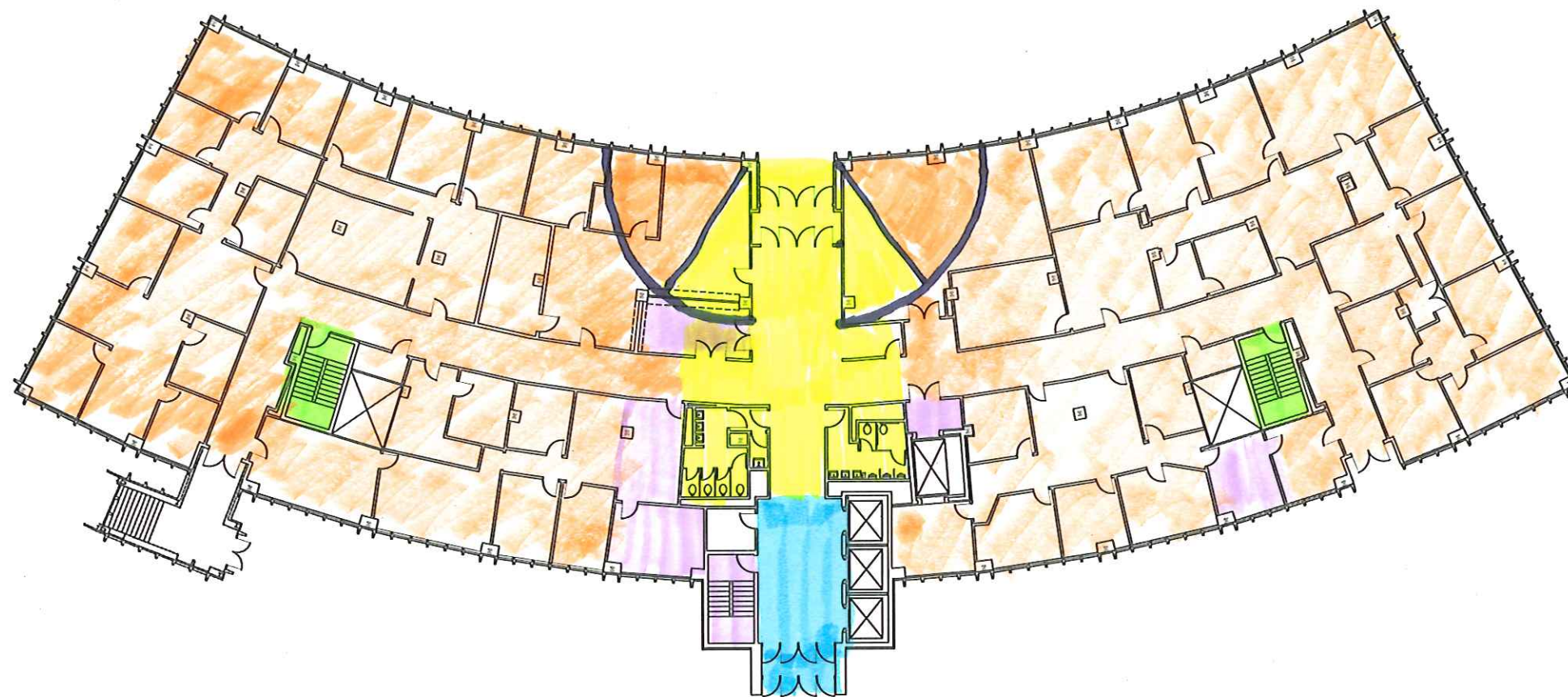
← N —


Connor S



BASMENT

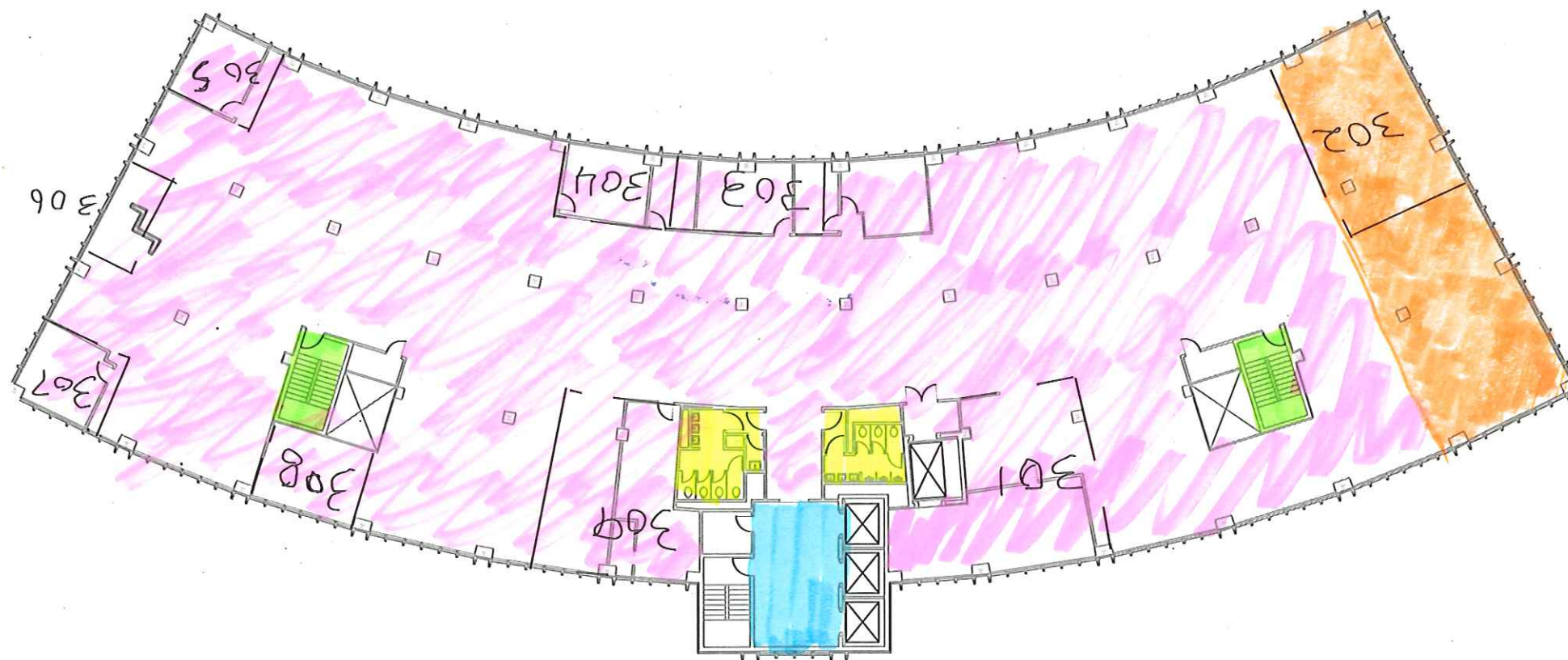
N ←



VCT TILE - 
CARPET - 
MARBLE - 
1'x1' CERAMIC
TILE - 
CONCRETE - 

FIRST FLOOR

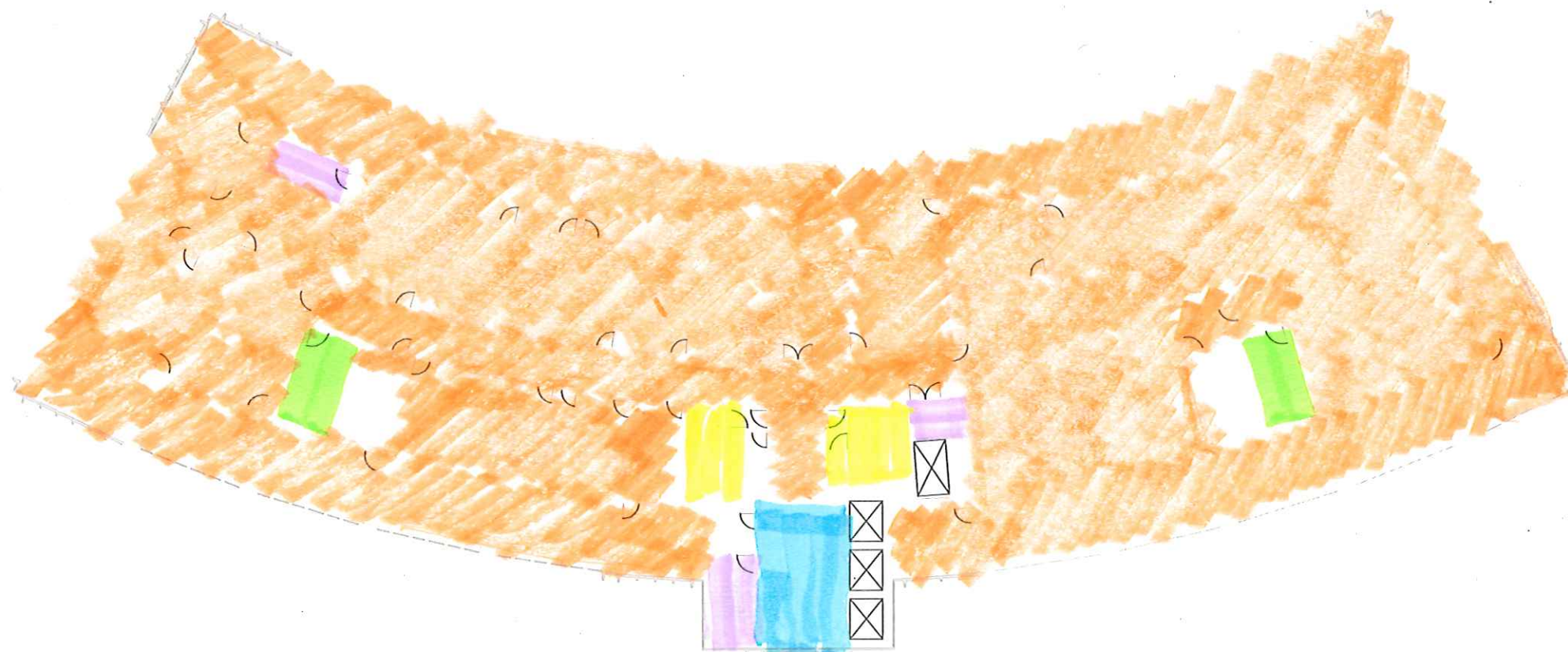
← N →



THIRD FLOOR

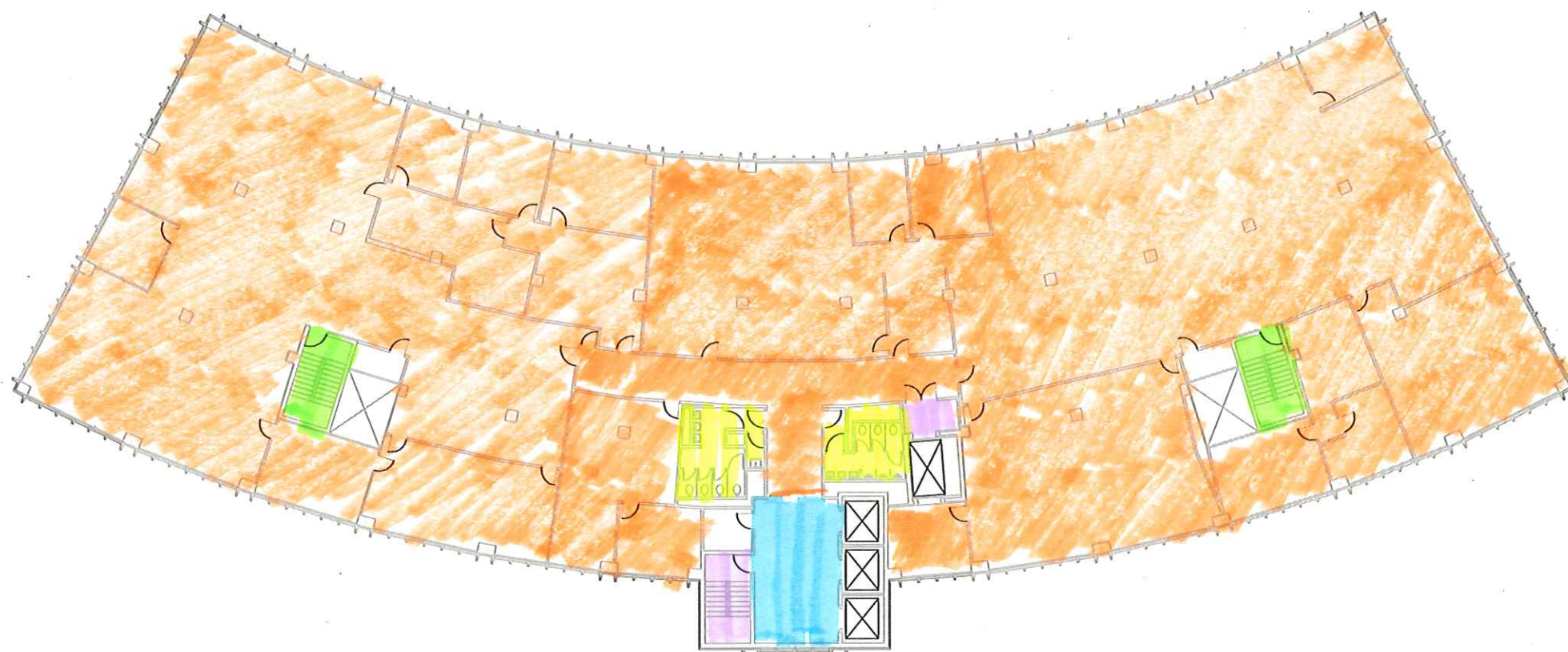


RUBBER EPOXY - 

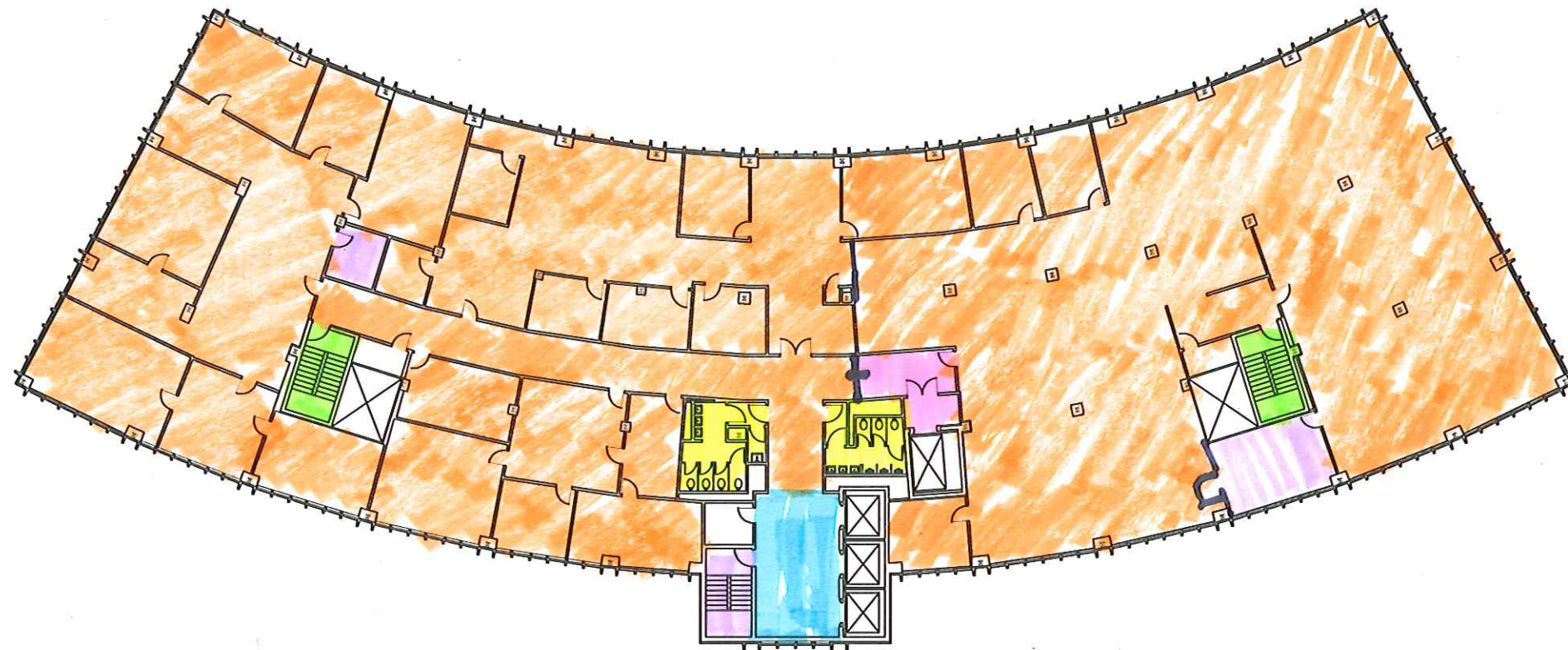







SECOND FLOOR





FOURTH FLOOR
← N →



VCT TILE — 
MARBLE — 
CARPET — 
2'x2' CERAMIC
TILE — 
1'x1' CERAMIC
TILE — 

FIFTH FLOOR
← N —